



Remember when building things was this simple?

With Paxton, it still is...



## Paxton Quick-start Kit

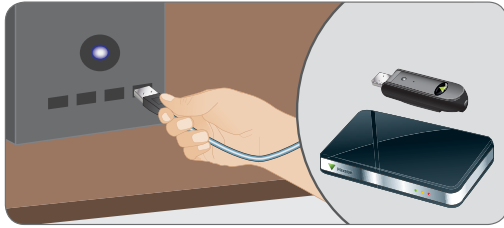
Follow our 10 simple steps to get to grips with your first access control system.



With your computer turned on, insert the Net2 software disc into the computer's CD drive.

Install the Net2 software, following the on-screen instructions.

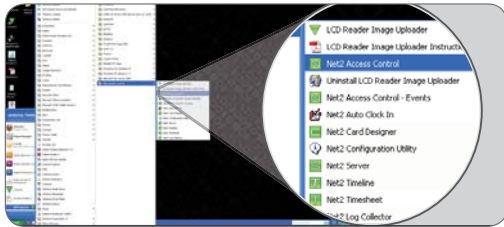
1



Plug the Net2Air dongle into a USB port on your computer.

Plug the desktop reader into another USB port on your computer, using the lead provided.

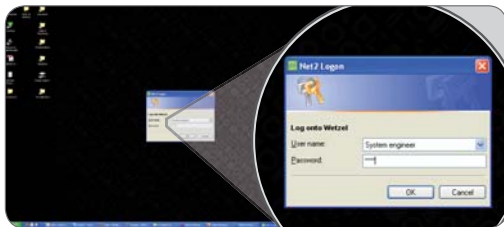
2



Go to the 'Start' menu at the bottom left-hand corner of the screen. Find the Net2 software within the 'All programs' list on your computer.

Start up the program by clicking on 'Net2 Access Control'.

3



When prompted, enter the default password, 'net2', into the Net2 logon box.

Click OK.

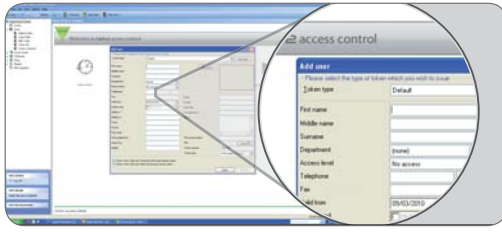
4



Take one of the cards or fobs supplied in your pack.

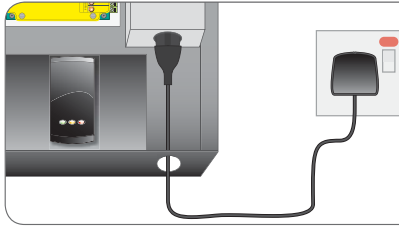
Place this on top of the desktop reader. You will see the lights on the desktop reader flash for a moment.

5



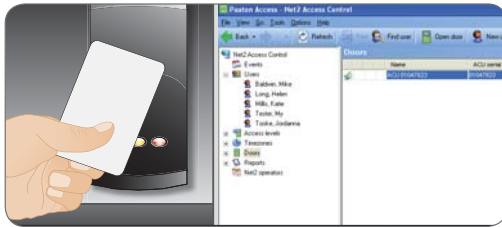
This card or fob will be immediately recognised by the Net2 software and a new screen will pop open. Enter the personal details and select 'All hours, all doors' from the 'Access level' drop down menu. You must click 'Add user' at this point. You can then close this window.

6



Next, plug in your Paxton Quick-start Kit using the power cable supplied. Turn it on. The LEDs will light up and you will hear a beep.

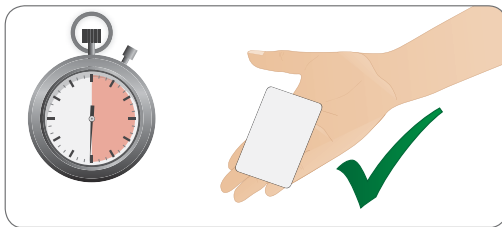
7



Take the card or fob that you added to the Net2 software in step 5.

Hold this up to the reader in the kit. You will hear a beep and the LEDs will flash. The kit has now been recognised and added to the Net2 software wirelessly.

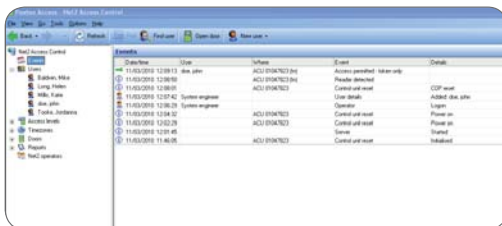
8



Please wait until the blue light on the control unit is flashing before using this card again. If the blue light is solid, the system is still finalising its connection.

That's it! Your system is now up and running!

9



If you now go to the Events tab, you will see a log of all the processes the system has undertaken throughout this setup.

Feel free to explore the Net2 software and view the Events log for real-time updates.

10



## What is in the box?

Net2 nano with 2A PSU in plastic cabinet

<http://paxton.info/1294>

PROXIMITY P50 reader

<http://paxton.info/1038>

Net2Air USB dongle

<http://paxton.info/1523>

Net2 desktop reader USB

<http://paxton.info/1009>

Net2 PROXIMITY ISO cards with magstripe x2

<http://paxton.info/1399>

Net2 PROXIMITY cards x2

<http://paxton.info/1399>

Net2 PROXIMITY keyfobs x2

<http://paxton.info/1399>

## Statement of Conformity

Paxton Access Ltd hereby declares that this product is in conformity with all the essential requirements of Directive 1999/5/EC. This equipment is intended for use in all EU and EFTA countries and all other countries worldwide.

The declaration of conformity is available on request.

Contact details are provided at: <http://paxton.info/596>

**CE0889**